

Renaissance

Renaissance

RE – again, new

NAISSANCE – Birth

- Study/ translation of Greek classics
- Influx of new literature from the east
 - Constantinople
 - Black death
- Rise of the merchant class

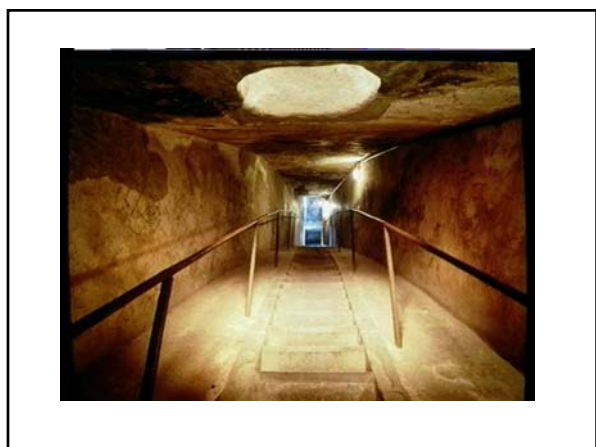
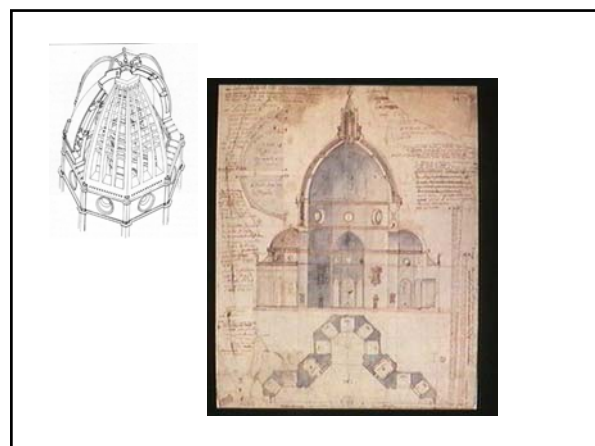


Brunelleschi



Ghiberti







Cosimo

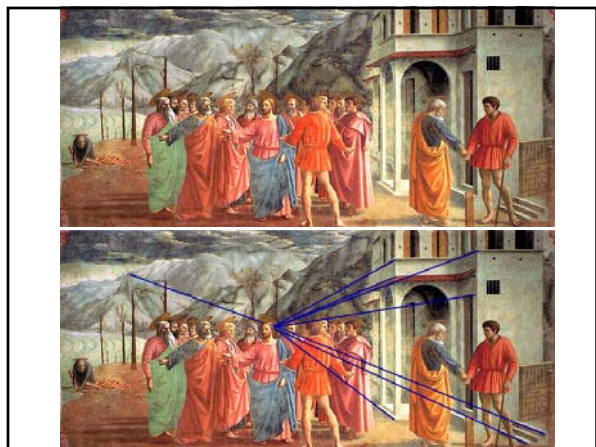


Piero



Lorenzo

Masaccio



Giovanni Arnolfini
&
His Bride

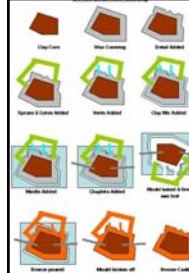


- Focus on logic and thought
- Recognition of the beauty of man as the pinnacle of creation
- Focus on education and beauty
- Acceptance of the value of art/ creation as an emulation of God

Donatello



Lost Wax Bronze



- Clay core
- Wax layer – detail
- Husk w/ spouts
- Heated – wax drains
- Bronze poured into space remaining
- Husk cracked off
- Statue polished/ finished

